



上智大学
SOPHIA UNIVERSITY

Faculty of Liberal Arts

FLA

国際教養学部

*Pioneering international
college education in Japan*

Faculty of Liberal Arts

Since 1949

Pioneering international college education

FLA students are diverse in background. Comprising over fifty nationalities, they include students educated at Japanese and international high schools in Japan, as well as both degree students and exchange students from abroad. The mission of the Faculty of Liberal Arts is to prepare such students to participate actively in international contexts and organizations. The Faculty's academic programs are designed to equip graduates with the intellectual acuity, linguistic abilities, and cultural skills necessary to take the lead in bridging differences and promoting understanding in today's increasingly multicultural and international world. In addition to the courses in the major disciplines, core courses in English composition, critical thinking, and public speaking prepare students of divergent linguistic backgrounds to succeed at an international academic level. The members of the multinational teaching staff, trained in the world's leading universities and holding the highest professional degrees in their fields, set high standards for the Faculty's students and introduce them to a variety of viewpoints and experiences. Interactions with fellow students and professors in the cosmopolitan environment of the Faculty of Liberal Arts establish a foundation for global citizenship.



Dean, Faculty of Liberal Arts
NAKANO Koichi

Dean's Welcome.

Welcome to
the Faculty of Liberal Arts (FLA)
at Sophia University.

Originally established in 1949 as the International Division of the university, we are Japan's oldest and best-known undergraduate program that offers all of its courses in English. Located at the heart of the vibrant global city of Tokyo, the FLA is a cosmopolitan community of students, scholars, staff, and alumni. We provide unique opportunities to learn about the changing realities of the globalizing world and its relationships with local, especially Japanese, societies and cultures from a wide range of perspectives. As such, we also attract a large number of exchange students every semester from all over the world.

Our courses are structured around three multidisciplinary majors: Comparative Culture, International Business and Economics, and Social Studies. Our internationally acclaimed faculty work hard with dedicated administrative staff to ensure that students acquire cross-national knowledge and sensitivities, strong analytical and communication skills, and deep academic understanding of their chosen subjects that they will need for professional careers in international affairs and business, as well as academic research.

We live in interesting, if testing, times. Our mission to pursue the truth and to do good as global citizens is more important than ever. I encourage you to explore our website as well as our brochures to learn more about what the FLA has to offer. We care and we dare. We hope that you do too.

History

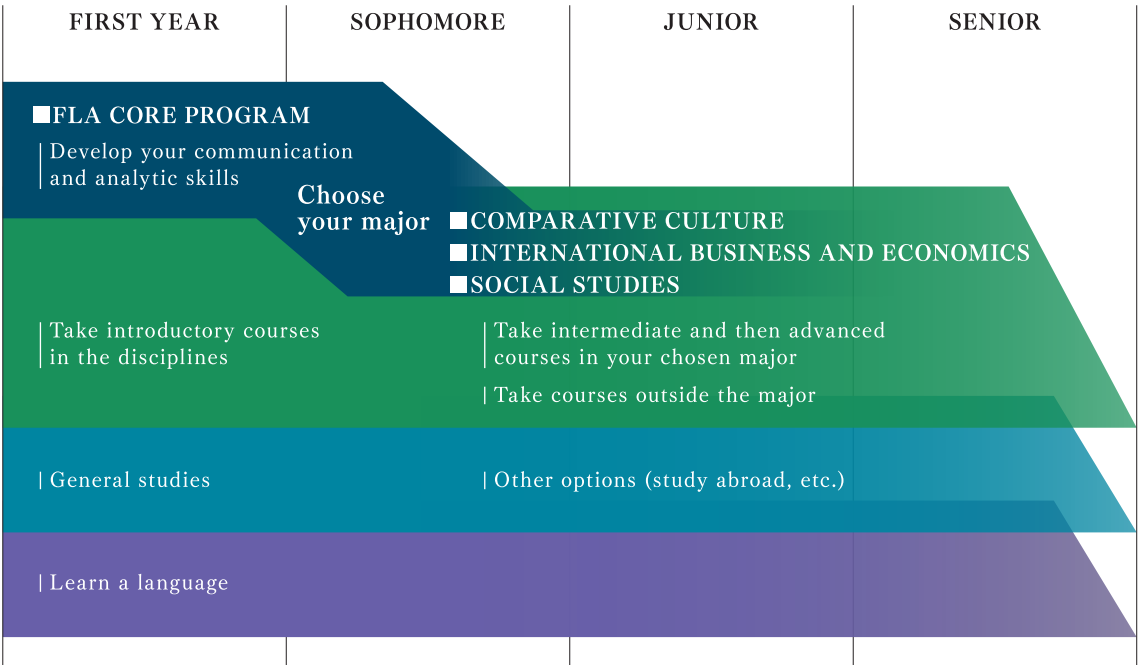
- 1949 ■ The International Division was founded.
- 1975 ■ The International Division became the Department of Japanese Language and Culture.
- 1977 ■ The Department of Japanese Language and Culture assumed the new name of the Department of Comparative Culture
- 1987 ■ The Department of Comparative Culture was promoted to become the Faculty of Comparative Culture.
- 2002 ■ 21st Century COE Program "Towards Area Based Global Studies, AGLOS" was selected by MEXT.
- 2003 ■ The Faculty earned Good Practice Award from MEXT.
- 2006 ■ The Faculty of Comparative Culture was reorganized as the Faculty of Liberal Arts.
- The Graduate Program in Global Studies was founded.
- 2009 ■ Sophia University was selected as one of 13 universities by MEXT to participate in the Global 30 Project.
- 2013 ■ Selected for Re-Inventing Japan Project "Trans-Disciplinary Human Development Education Program Aiming for Harmonized Diversity" by MEXT.
- 2014 ■ Selected for the Top Global University Project (Type B: Global Traction Type).

Anticipating the Needs of Global Society

Centered on courses in comparative culture, international business and economics, and social studies, the broad interdisciplinary curriculum of the Faculty of Liberal Arts aims to extend students’ general knowledge while developing their critical thinking. A wide range of courses on Japan enables students to understand both present-day Japan and its traditions in a global context.

Curriculum

The curriculum of the Faculty of Liberal Arts enables students to acquire a strong academic foundation and intellectual orientation before selecting a disciplinary major. During the first year, students develop their writing and analytic skills, and take introductory courses in a range of academic disciplines. In their sophomore year, students select one of three majors (Comparative Culture, International Business and Economics, or Social Studies) in which to concentrate. In their junior and senior years, students take advanced courses in their selected major as well as continuing to study in courses outside their major. Many students also take advantage of the numerous short-term and long-term study abroad programs to enrich their educational experience.



SPECIALIZED EDUCATION

FLA CORE PROGRAM

The Core Program, compulsory for all FLA degree students during the first and second years of study, enhances students’ writing, public speaking, and critical thinking skills, and prepares students for

specialized study. Students are assigned to the appropriate level in the Core Program based on an English placement test that all students take upon entering the Faculty.

MAJOR COURSES:

Students choose a major at the end of the first term of their second year and take courses according to the requirements of their major.

COMPARATIVE CULTURE

The Comparative Culture major follows an interdisciplinary approach to knowledge in the three fields of Art History, Literature, and Religion -Philosophy. By studying these fields students learn methods for understanding the cultural expression of the human spirit, emotions, thought, and aspirations as well as the societies and institutions from which they arose.

INTERNATIONAL BUSINESS AND ECONOMICS

Courses offered in the International Business and Economics major focus on developing skills in theoretical and empirical analysis and learning to apply these skills to real-world economic phenomena and managerial problems. The focus is on the international dimensions of business and economics. Within this global context, special attention is given to Japanese business and economic studies.

SOCIAL STUDIES

The Social Studies major, consisting of Anthropology -Sociology, History, and Political Science, provides students with historical, comparative, and theoretical insights into the processes that constitute civilizations and society. Courses consider how particular societies and cultures have changed over time, patterns of similarity and difference, and how these processes have been depicted in popular and scholarly imagination. Advanced courses encourage first-hand study of social phenomena through collection and analysis of original data.

GENERAL STUDIES

The General Studies (GS) requirements allow students to study beyond a specialized area, facilitating interdisciplinary understanding of academic fields and reflection upon fundamental human and social issues. In

addition to Studies in Christian Humanism, Health and Physical Education, the Faculty offers GS distribution courses in three categories: Society and Culture, Cultural Traditions, and Politics and Economy.

OTHER OPTIONS

COURSES IN OTHER SOPHIA FACULTIES

Students may take elective courses taught in Japanese in other Sophia University Faculties.

CERTIFICATION PROGRAM

Japanese proficiency required.
- Curator Certification

STUDY ABROAD

See page 9.

LANGUAGE

Students can choose one language from the university’s language program: Arabic, Chinese, French, German, Indonesian, Italian, Japanese, Korean, Latin, Portuguese, Russian, Spanish, or Tagalog.

See Page 5 and 6 for the course list ▶▶

Course List

SPECIALIZED EDUCATION

■ CORE PROGRAM

- Academic English Skills
- English Composition 1
- English Composition 2
- Public Speaking
- Thinking Processes

■ COMPARATIVE CULTURE

- 〈ART HISTORY/VISUAL CULTURE〉

- Introduction to Art History/Visual Culture 1

- Introduction to Art History/Visual Culture 2

- Survey of Western Art 1

- Survey of Western Art 2

- Survey of Japanese Art 1

- Topics in Japanese Art

- Popular Culture Studies

- Studies in Art History

- Studies in Visual Culture

- Gender in Japanese Visual Culture

- Japanese Art in Cross-Cultural Context

- Studies in Modern Japanese Art History

- Animation Studies

- Media Studies

- Comparative Art History

- Seminar in Art History 1

- Studies in East Asian Visual Culture

- Film Studies

- Seminar in Japanese Art History

- Representation of Body: Race and Gender
- 〈LITERATURE〉

- Literary Genres

- Introduction to Japanese Literature

- Western Literature

- Japanese Film

- Contemporary Japanese Literature

- Remembering the War in Japanese Literature

- American Poetry

- Contemporary Literature

- Literature and Film

- Asian Texts: Legacy of The Past

- Survey of Japanese Literature 1

- Modern Japanese Fiction

- Comparative Literature

- Asian Literature

- World Literature: A Literary Journey

- Writing about Love: Past and Present

- Creative Writing

- Global Haiku

- Japanese Literature as World Literature
- History of Popular Literature in Japan

- Seminar in Modern Literature

- Samurai in Literature and History

- Seminar in World Literature
- 〈RELIGION/PHILOSOPHY〉

- Introduction to Philosophy

- Fundamentals of Religion

- Intellectual Traditions of South Asia

- The Encounter of Religions in the Modern World

- Religion, Conflict and Violence

- Japanese Religions

- South Asian Aesthetics

- Buddhist Traditions

- Business Ethics

- Indigenous Religion

- Southeast Asian Classical and Medieval Texts

- Religion and the Body

- Philosophical Approaches to Buddhism

- Topics in Religion and Philosophy

■ INTERNATIONAL BUSINESS AND ECONOMICS

- Principles of Microeconomics
- Principles of Macroeconomics
- Principles of Management
- Management Information Systems
- Introduction to Accounting
- Management Accounting
- Financial Management
- Intermediate Microeconomics
- Strategic Management
- Marketing
- Human Resource Management
- International Trade
- International Finance
- Economic Issues in the Developing World
- Money and Banking
- Women and Men in the Labor Market
- Economic Statistics
- NGO Management
- Product Development
- International Business
- Consumer Behavior
- Topics in Japanese Business and Economics
- Quantitative Approaches to Management
- Economic Survey of Contemporary Japan
- Advanced Macroeconomics
- Development Economics
- Economics of Poverty
- Seminar in Business
- Management in Japan
- Human Resource Management in Japan
- Venture Management
- Operations Management
- Marketing in a Digital World
- Economics of Health and Health Care Policy
- Strategic Thinking
- Topics in Finance
- Issues in Accounting
- Financial Accounting

■ SOCIAL STUDIES

- 〈ANTHROPOLOGY-SOCIOLOGY〉

- Introduction to Cultural and Social Anthropology

- Anthropology of Japan

- Nature and Culture

- Human Ecology: Rivers 1

- Japanese Popular Culture

- Japan Research

- Research Methods in Anthropology

- Field Methods in Cultural Anthropology

- Digital Oral Narratives 1

- Digital Oral Narratives 2

- Korean Studies: North and South

- Technology and Nature in Japan

- Anthropology Practicum 1

- Anthropology Practicum 2

- Nature and Society

- Advanced Readings in Anthropology

- Introduction to Sociology

- Introduction to Social Theory

- Introduction to Japanese Society

- Border Crossing and East Asia

- Sociology of Culture

- Introduction to Field Research

- Survey Methods

- Qualitative Research Methods

- Society and Politics
- Population and Society

- Sociology of Sexuality and Gender

- Sociology of Economic Life

- Sociology of Health and Aging
- 〈HISTORY〉

- Development of Japanese Civilization 1

- Development of Japanese Civilization 2

- History of Chinese Civilization

- Topics in History 1

- Topics in History 2

- Women in Japanese History

- Modern Japan

- History of Japanese Foreign Relations

- Chinese Cultural History

- Global History

- Seminar in Modern Japanese History 1

- Seminar in Japanese History

- Issues in Chinese History

- Modern Korean History

- The Euro-Asian Encounter

- Issues in East Asian History

- Issues in Premodern Japanese History
- 〈POLITICAL SCIENCE〉

- Theories and Themes of Contemporary Politics

- Introduction to International Relations

- Introduction to Comparative Politics

- Controversies in Globalization

- Classical Western Political Theory

- Japanese Foreign and Security Policy

- Human Ecology: Rivers 2

- Modern Western Political Theory

- European Politics

- Nonprofit NGOs in Comparative Contexts

- Japanese Government and Politics

- Global Political Economy

- Environmental Politics of Agriculture

- Political Ecology

- Seminar in Political Science

- Agrarian Societies

- Political Leadership

- Nationalism, Citizenship and Democracy in Japan

- Comparative Politics of Advanced Industrial Democracies

- International Relations Theory

- Political Economy of Development

- Comparative Politics of Post-Communist States

- Propaganda and Public Opinion

GENERAL STUDIES

■ REQUIRED COURSES

- Health and Physical Education
- Studies in Christian Humanism
- FLA Distribution Courses:

- Society and Culture

- Cultural Traditions

- Politics and Economy

■ FLA GENERAL COURSES

- Computer Studies 1,2,3
- Environmental Issues 1
- Human Geography
- Geography
- College Mathematics
- Mathematics and Statistics for Business and Economics

LANGUAGE (OFFERED BY THE CENTER FOR LANGUAGE EDUCATION AND RESEARCH)

- Basic Chinese 1,2

- Intermediate Chinese 1,2

- Advanced Chinese A,B,C,D

- Basic French 1,2

- Intermediate French 1,2

- Advanced French (Integrated Skills) A,B

- Advanced French A,B,C,D,E,F,G,H

- Basic Spanish 1,2

- Intermediate Spanish 1,2
- Advanced Spanish (Integrated Skills) A,B

- Advanced Spanish A,B,C,D

- Japanese Language Program

- Japanese 1,2,3,4

- Japanese M1,M2,M3

- Advanced Japanese 1,2

- Intensive Japanese 1,2,3,4

- Business Japanese 1,2

- Business Japanese (Preparation for Internship)
- Reading and Writing (Basics)

- Reading and Writing 1,2,3

- Japanese Literacy 1,2

- Translating English to Japanese: Theory and Practice 1,2

- Translating Japanese to English: Theory and Practice

- Academic Japanese 1-1, 1-2, 2-1, 2-2

- Introduction to Japanese Economic Studies for International Students 1,2

In addition to the above, language courses in Arabic, German, Indonesian, Italian, Korean, Latin, Portuguese, Russian, and Tagalog are also offered. The instruction in these courses may use Japanese.

Faculty And Students



Tatsuya Tabuchi

Social Studies Major

Studying at the Faculty of Liberal Arts has constantly been about self-exploration. The interdisciplinary structure of the general courses allowed me to wander freely between subjects, and the engaging courses taught by accomplished professors enabled me to find that one subject and class I finally clicked with. This capacity for self-discovery is what I treasured above all else at the FLA. You will find here a diverse environment where students can learn to think

critically and develop their own take of the world.

Students majoring in Social Studies are especially given the chance to merge theory with practice by doing fieldwork. In my case, examining the dynamics of social displacement through interviews with foreign individuals. Perhaps the most important thing I learned at the FLA is that some knowledge is only accessed by getting your hands dirty and applying yourself out there where it all happens.

Angela Yiu

Professor of Literature

Imagine 30 students from 7 countries and over 10 ethnic backgrounds engaged in the interpretation of a Japanese story written eighty years ago, and you have a picture of reading Akutagawa in our Modern Japanese Fiction class. Our liberal arts curriculum enables students to go beyond the historical and cultural boundaries of their lives and venture into the vast continuity of time and knowledge in order to enrich their

minds and understand the world. Students do not sit back to absorb ideas passively but are encouraged to develop a critical mind and voice through grappling with complex ideas both in group discussions and writing assignments.



Buyandelger Gan-Ulzii

International Business and Economics Major

I have come to cherish my own ethnicity and my background more than ever by entering the Faculty of Liberal Arts at Sophia University. Coming from Mongolia, the landlocked country with only two neighbors, the diversity of the FLA community struck me. For such community, the variety of FLA curriculums provides the solid foundation to learn and acknowledge the cultural differences and to think globally with a critical mind. In many of my classes from the IBE major, I could deepen my understanding of timely issues and

controversial topics of the Japanese and the global economy. Furthermore, the in-class discussions encourage students to share their values and experiences, which become a great resource for a multicultural understanding. The higher level IBE courses often include group assessments, allowing students to further hone their presentational and teamwork skills. Altogether, I strongly believe Sophia's liberal arts education is enriched by the skillful guidance of the professors and each student's contribution of their distinctive experiences.



James C. Farrer

Professor of Sociology

In every region of the world universities increasingly are focusing on “globalizing” or “internationalizing” the educational experience. Sophia's Faculty of Liberal Arts is a globalizing pioneer, including English instruction, an international faculty, and a diverse student population. Over several decades the Faculty has developed into a unique “global space” in which students negotiate cultural and social

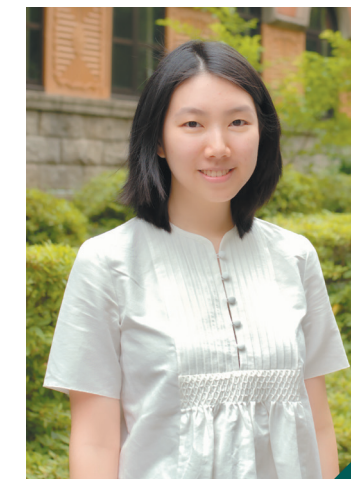
differences in an environment that encourages learning and mutual respect. Perhaps there is no university environment anywhere that better prepares students for the experiences of a transnational job market and life in a multicultural, multilingual global society in which no single culture or society will dominate.

Madeleine Par

Comparative Culture Major

Whenever a class period finishes at Sophia, a sea of students surge the campus' main street. The road becomes instantly cramped, crowded, chaotic. Each side is occupied with lines of people walking in opposite directions. In my experience, within crossing that ocean of humanity, you will always find a familiar face: someone to smile and bow your head to. The university is not a very large one and that is possibly what I love most about it: the community you are

immersed in is one that is incredibly close and strikingly supportive. In the FLA, you have the opportunity to engage with every one of your classmates; you feel less intimidated when vocalizing your thoughts in class; your professors actually learn your name. When you have such a strong and present network of support, you feel really motivated to study and do your very best. The FLA has that and I feel supremely privileged to have benefitted from it.



Michiru Sakane

Associate Professor of Economics

I teach economics in our program. My courses are designed to provide students with analytical and quantitative skills, which enable them to investigate various economic phenomena. Our curriculum is designed in a way that encourages students to explore their academic interests in depth by working from the ground up. For example, in Economic Survey of Contemporary Japan, students are asked to apply

the theoretical tools they learned in Principles of Macroeconomics to analyze the underlying mechanisms of Japanese macroeconomic problems. I believe that our structured curriculum is best suited for gaining profound insight into society.

Study Abroad

Broaden your intellectual horizons through Sophia University’s world wide educational network of exchange schools! Sophia University has more than 280

exchange partner institutions throughout world as of May 2019. Every year, around 300 students study abroad on exchange for a semester or full academic year.

North America

Canada	University of Alberta
	The University of British Columbia
	King's University College at the University of Western Ontario
	Université Laval
	McGill University
	University of Regina
	University of Victoria
	Université de Montréal
	Arizona State University
	The University of Arizona
U.S.A.	Boston College
	California State University, Fullerton
	Canisius College
	The Catholic University of America
	Clemson University
	The University of Connecticut
	Creighton University
	University of Colorado at Boulder
	DeSales University
	Duquesne University
	Fairfield University
	George Mason University
	Georgetown University
	University of Georgia
	Gonzaga University
	Haverford College
	University of Hawaii at Manoa
	College of the Holy Cross
	John Carroll University
	The University of Kansas
	Le Moyne College
	University of Louisiana at Lafayette
	Loyola Marymount University
	Loyola University Chicago
	Loyola University New Orleans
	Marquette University
	University of Massachusetts Amherst
	University of Massachusetts Boston
	University of Miami
	University of Minnesota
	The University of Mississippi
	University of Missouri-Columbia
	University of Montana
	The New School
	University of North Carolina at Chapel Hill
	University of North Carolina at Charlotte
	North Carolina State University
	University of North Florida
	Northwest Missouri State University
	Occidental College
	Pace University
	University of Pennsylvania

U.S.A.	The University of Pittsburgh
	University of Portland
	Saint Mary's College of California
	Saint Peter's University
	San Diego State University
	University of San Francisco
	San José State University
	Santa Clara University
	The University of Scranton
	Seattle University
	Seton Hall University
	St. John's University (NY)
	St. Joseph's University
	St. Mary's University
	St. Norbert College
	University of St.Thomas
	Suffolk University
	Tennessee Tech University
	The University of Texas at Austin
	University of Virginia
	Washington and Jefferson College
	University of West Florida
	University of West Georgia
	Winona State University
	University of Wisconsin-Madison
	University of Wisconsin-Whitewater
	Wittenberg University
	Xavier University
	Yale Univeristy
	York College of Pennsylvania

Latin America

Argentina	Universidad Católica de Córdoba
	Universidad del Salvador
Brazil	Universidade de Brasília
	Universidade Estadual de Campinas
	Pontificia Universidade Católica do Rio Grande do Sul
	Pontificia Universidade Católica de São Paulo
Chile	Universidade de São Paulo
	Universidad Alberto Hurtado
Colombia	Pontificia Universidad Católica de Chile
	Universidad de los Andes
Guatemala	Universidad Rafael Landívar
Mexico	Universidad de Guadalajara
	Universidad de Guanajuato
	Universidad Iberoamericana Ciudad de Mexico
	Instituto Tecnológico Autónomo de México
	Instituto Tecnológico y de Estudios Superiores de Monterrey
	Instituto Tecnológico y de Estudios Superiores de Occidente

Mexico	Universidad Nacional Autónoma de México
Peru	Pontificia Universidad Católica del Perú
Uruguay	Universidad Católica del Uruguay

Asia

China	Beijing Foreign Studies University
	Central University of Finance and Economics
	China Foreign Affairs University
	Fudan University
	Harbin Institute of Technology
	Nankai University
	Renmin University of China
	Tsinghua University
	Wuhan University
	Xiamen University
	The Chinese University of Hong Kong
	Hong Kong University of Science and Technology
	The University of Hong Kong
	City University of Hong Kong
	University of Macau
India	CHRIST (Deemed to be University)
Indonesia	Bogor Agricultural University
	Universitas Gadjah Mada
	Universitas Indonesia
	Petra Christian University
Malaysia	Sanata Dharma University
	Universiti Kebangsaan Malaysia
Philippines	University of Malaya
	Universiti Teknologi Malaysia
Singapore	Ateneo de Manila University
	De La Salle University
South Korea	University of the Philippines
	Singapore Management University
	Yale-NUS College
	Catholic University of Daegu
	The Catholic University of Korea
Taiwan	Hankuk University of Foreign Studies
	Pusan National University, College of Humanities
	Seoul National University
	Sogang University
	Sookmyung Women's University
Thailand	Yonsei University
	Fu Jen Catholic University
	National Chengchi University
	National Taiwan University
	Chiang Mai University
	Chulalongkorn University
	Mahidol University
	Thammasat University

Vietnam	Foreign Trade University
	VNU University of Social Sciences and Humanities, Hanoi

Middle East

Lebanon	Université Saint-Joseph
Turkey	Istanbul Bilgi University

Europe

Austria	Karl-Franzens-Universität Graz
Belarus	Belarusian State University
Belgium	Université Catholique de Louvain
	Universiteit Antwerpen
	Université de Namur
Croatia	The Zagreb School of Economics and Management
Czech	Anglo-American University
Denmark	Aarhus University
Finland	Aalto University School of Business
	Hanken School of Economics
France	EAC Group Business School of Arts, Culture and Luxury
	Ecole Supérieure des Sciences Commerciales D'Angers
	École Supérieure de commerce et management (ESEM)
	Burgundy School of Business
	Institut Catholique de Paris
	Institut d'Etudes Politiques de Grenoble
	Institut d'Etudes Politiques de Paris
	Institut National des Langues et Civilisations Orientales
	NEOMA Business School
	Université Bordeaux Montaigne
	Université Catholique de Lille
	Université Catholique de l'Ouest in Angers
	Université Catholique de Lyon
	Université d' Angers
	Université d'Aix-Marseille
Germany	Université de Franche-Comté, Besançon
	Université de Strasbourg
	Université Jean Moulin Lyon 3
	Université de Lille
	Université Panthéon-Assas Paris II
	Université Paris-Dauphine
	Université Paris X Nanterre
	Institut Catholique de Toulouse
	ESSEC Business School
	Albert-Ludwigs-Universität Freiburg
	Bremen University of Applied Sciences
	European University Viadrina
	Freie Universität Berlin
	Hochschule für Philosophie München
	Hochschule Ludwigshafen am Rhein
	Katholische Universität Eichstätt-Ingolstadt

Germany	Martin-Luther-Universität Halle-Wittenberg
	Philosophisch-Theologische Hochschule Sankt Georgen
	Rheinische Friedrich-Wilhelms-Universität Bonn
	Technische Hochschule Nürnberg Georg Simon Ohm
	Technische Universität Berlin
	Universität Bayreuth
	Universität des Saarlandes
	Ruprecht-Karls-Universität Heidelberg
	Universität Paderborn
	Universität Rostock
Hungary	Universität Trier
	Eberhard Karls Universität Tübingen
	Universität Witten/Herdecke
Iceland	Universität zu Köln
	Heinrich-Heine-Universität Düsseldorf
Ireland	The University of Pécs
Iceland	University of Iceland
Ireland	Dublin City University
Italy	Università Ca' Foscari Venezia
	Università Carlo Cattaneo
	Università Cattolica del Sacro Cuore
	Università degli studi di Napoli "L'Orientale"
Kazakhstan	Università di Cagliari
	Università di Roma "La Sapienza"
	Al-Farabi Kazakh National University
Liechtenstein	University of Liechtenstein
Lithuania	Vytautas Magnus University
	Vilnius University
Luxemburg	Université du Luxembourg
Netherlands	University of Amsterdam , Faculty of Social and Behavioural Sciences
	Leiden University
	Rotterdam Business School
Norway	University of Oslo
Poland	Jagiellonian University in Kraków
Portugal	Universidade de Aveiro
	Universidade de Coimbra
Russia	Universidade do Minho
	Universidade do Porto
	Far Eastern Federal University
	Herzen State Pedagogical University of Russia
	Moscow State Linguistic University
	Moscow State University
	Petrozavodsk State University
	Ryazan State University
	Saint Petersburg State University
	Saint-Petersburg State University of Culture
Slovenia	Voronezh State University
	University of Ljubljana
Spain	Universidad Autónoma de Madrid

Spain	Universidad Católica de Valencia San Vicente Mártir
	Universidad de Burgos
	Universidad de Córdoba
	Universidad de Deusto
	Universidad de Jaén
	Universidad de La Laguna
	Universidad de Las Palmas de Gran Canaria
	Universidad de Salamanca
	Universidad de Sevilla
	Universitat de València
Sweden	Universidad Loyola Andalucía
	Universidad Pontificia Comillas
Switzerland	Universitat Autònoma de Barcelona
	Uppsala Universitet
United Kingdom	The Graduate Institute of International and Development Studies
	Universität St.Gallen
Uzbekistan	Université de Genève
	Newcastle University
	St Mary's University Twickenham London
	The University of Birmingham
	The University of Edinburgh
	The University of Reading
	The University of Sheffield
	The University of Stirling
	University of East Anglia
	University of Hertfordshire
Africa	University of Leeds
	SOAS (University of London)
	York St John University
Uzbekistan	Tashkent State Institute of Oriental Studies
Benin	Université d'Abomey-Calavi
Cameroon	Catholic University of Central Africa
Cote d'Ivoire	Centre de Recherche et d'Action pour la Paix
South Africa	Stellenbosch University

Oceania

Australia	Australian Catholic University
	Deakin University
	La Trobe University
	Macquarie University
	The University of Adelaide
	The University of Melbourne
	The University of Notre Dame Australia
	The University of Queensland
	Royal Melbourne Institute of Technology (RMIT University)
	The University of Sydney
New Zealand	The University of Western Australia
	Western Sydney University
	University of Technology, Sydney
	Griffith University
Fiji	University of Wollongong
	The University of Auckland
	The University of the South Pacific

Faculty Graduates Are Highly Distinctive And Sought After

Because of their language skills, solid academic training, and international experience, graduates of the Faculty of Liberal Arts are in great demand within both the Japanese and international job markets. Many students find employment in Japanese and foreign firms in Japan or are admitted into top graduate schools and professional training programs throughout the world.

Support in finding employment and applying to graduate schools is offered in a variety of ways. For students seeking employment, on-campus job fairs and workshops are held throughout the year to provide valuable information on internships and job opportunities. In addition, professors offer individual guidance to students looking to apply to graduate schools both in Japan and abroad.

| Where Students Go |

Public Service and Education	Ministry of Foreign Affairs of Japan, Ministry of Defense, Ministry of Agriculture, Forestry and Fisheries, etc.
Trade and Industry	Ajinomoto, ANA, JAL, Mitsubishi Cooperation, MITSUI & Co., Shiseido, Toyota Tsusho Corporation, Audi, Phillip Morris, P&G, Nihon L'OREAL K.K., etc.
Banking and Finance	Bank of Japan, Goldman Sachs, Morgan Stanley, MUFG Bank, Ltd., Citibank, SMBC Nikko Securities Inc., Mizuho Financial Group, etc.
Media and Arts, Communications and Technology	Dentsu, Fuji Television, HAKUHODO, NHK, TV Asahi, Price Waterhouse Coopers, Apple, Rakuten, IBM, TATA Consultancy Services, Oracle, etc.
Graduate School	Columbia University, Harvard University, Kyoto University, Leiden University, Oxford University, University of Chicago, University of Tokyo, etc.

Graduate's Voice

Emi Tajima

- Dow Chemical -

I graduated from the Faculty of Comparative Culture (aka. FLA) and joined Dow Chemical Japan in 2007 as an account manager. Dow Chemical is the biggest US chemical company whose headquarters are in Midland Michigan. Currently, with more than 10 years of commercial experience in Japan, I am sent to HK as a marketing manager to look after the APAC market, including the India region. I

believe my experience in the FLA surely helped me a lot in broadening my perspective, which makes me appreciate my current diversified work environment, consisting of many team members from different countries/backgrounds. Also, my study in the FLA equipped me with comprehensive working knowledge of English, and I regard this as a very important foundation of myself being competitive in a global company like Dow. I strongly recommend the FLA for students who aspire to build up their career in the global business environment.



Admissions

For Freshman Students

1. Regular Admissions (Document screening)

Acceptance decisions are made on the basis of SAT/ACT/IB Diploma/GCE A levels scores (grades), TOEFL/IELTS scores, official high school transcripts, an essay, and two recommendation letters.

For details, please refer to: www.sophia.ac.jp/eng/ ▶Admissions

2. Admissions by Recommendation (Only for Japanese high school students)

Those who are enrolled in Japanese high schools and whose first choice is Sophia University can apply for Admissions by Recommendation.

Students must meet a language and a high school GPA requirement to apply. Applicants must take an on-campus test and interview on Yotsuya Campus.

For details, please refer to: www.sophia.ac.jp ▶入試案内

For Transfer Students (juniors)

Those who are expected to have completed two full academic years or more of university/college* education as full-time students can apply as

transfer students. They must complete at least two years of study in residence in order to receive a Sophia University degree.

*Bachelor's/associate degree-conferring institution

For details, please refer to: www.sophia.ac.jp/eng/ ▶Admissions

For Students Interested in Short-term Study

1. Non-Degree Program

Non-degree students are those who enroll in the Faculty of Liberal Arts for one or two semesters to take undergraduate courses and obtain credits but do not intend to receive an academic degree. This status is applicable only to international students who will enroll

as full-time students. Most of the undergraduate courses, as well as Japanese language courses, are available to non-degree students. Applications are accepted directly from applicants or through CIEE (The U.S. based Council on International Educational Exchange).

For details, please refer to: www.sophia.ac.jp/eng/ ▶Admissions

2. Exchange Program

Students studying at one of Sophia's exchange partner institutions may apply as exchange students for one or two semesters of study abroad. (See page 9.)

3. Short-Term Programs

The following short-term programs are available for international students.

- Summer Session in East Asian Studies and Japanese Language
3 weeks in June
- January Session in Japanese Studies
(4 weeks in January)

Financial Assistance

1. Sophia University Scholarship Programs

New Students Scholarships

This scholarship is offered to new degree students (for whom Sophia is the first choice) with financial difficulties who show excellent academic potential. The grant varies from

one-third to the entire amount of tuition. Application should be submitted at the time of application for admission, and grantees will be notified upon acceptance to the university.

Sophia University Academic Excellence Awards

The honors grant (70,000 yen as a supplementary prize) is available to undergraduate sophomores, juniors, and seniors

who show high academic performance. Grantees are decided by recommendation from the Dean of each Faculty.

Sophia University Tuition Support Scholarships

Scholarships offered to degree students in good standing who are experiencing financial problems that make it difficult for them to continue their studies. The

grant varies from one-third to the entire amount of tuition. Applicants are accepted after entrance to the university.

Sophia University Benefactors' Scholarships

Scholarships provided by benefactors in and outside Japan. Some of them requires the students' application for selection; for others the award is made on the basis of the recommendation of the Dean of the Faculty

in which the student is enrolled. Eligibility for such scholarships begins after entrance to the university.

2. Scholarships Offered by Public or Private Institutions

More than 100 kinds of scholarship programs are available. Of these, about 60 are reserved for international students with student visa status (each scholarship has its own requirement and criteria for selection process and most of

them requires Japanese ability). Applications for these scholarships are accepted through the university after entrance.

Dormitories

1. Sophia Soshigaya International House (for Men and Women)

20 min. walk from Odakyu line "Seijo Gakuen mae" sta. / Keio line "Sengawa" sta. Commute time: 60 min.

2. Sophia - Arrupe International Residence (for Men and Women)

1 min. walk from JR Chuo/Sobu line "Shinanomachi" sta. Commute time: 10 min.

3. Sophia Edagawa Men's Dormitory

10 min. walk from Tokyo Metro Yurakucho line "Toyosu" sta. Commute time: 40 min.

4. Sophia Higashi-Nakano Women's Dormitory*

7 min. walk from JR Chuo/Sobu local line "Higashi-Nakano" sta. Commute time: 25 min.

5. Sophia Kasai International House Women's Dormitory*

9 min. walk from Tokyo Metro Tozai line "Kasai" sta. Commute time: 45 min.

6. Lestonnac Izumi Kan (for women)**

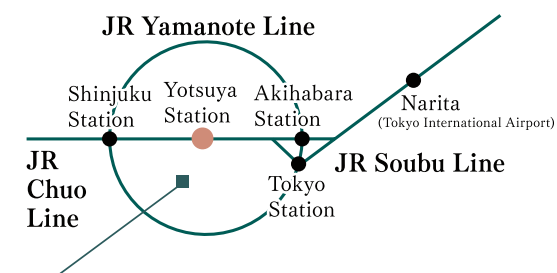
15 min. walk from Tokyo Metro Marunouchi line "Honancho" sta. Commute time: 45 min.

*owned and managed by Kyoritsu Maintenance

**owned and managed by "Sisters of the Company of Mary, our Lady"



Access



Sophia University

3 min. walk from Yotsuya station, JR / Tokyo Metro.



FLA

Faculty of Liberal Arts

Sophia University Admissions Office

7-1 Kioi-cho, Chiyoda-ku, Tokyo 102-8554, Japan

From abroad

MAIL admission-u@cl.sophia.ac.jp

TEL + 81-3-3238-4018

FAX + 81-3-3238-3262

URL www.sophia.ac.jp/eng/



- LV (Lux Veritatis: ラテン語) = 真理の光
- UNIVERSITAS SEDIS SAPIENTIAE (ラテン語) = 上智の座の大学
- SOPHIA (ギリシャ語) = 最上の叡智

「真理の光」を目指して力強く羽ばたく鷲のシンボルに、学生が優れた知恵を身に付けて、よりよい未来を拓いてほしいという上智大学の願いが込められています。